

# VESP211

## Vlinx™ Ultra Compact Ethernet Serial Servers

- ✓ Ultra compact design fits into the tightest spaces
- ✓ RS-232, RS-422/485, and RS-232/422/485 (MEI) models
- ✓ Wide Operating Temperature (-40 to 80C)
- ✓ Wide Voltage input 10 to 30VDC
- ✓ IP30 Metal Enclosure
- ✓ Heavy industrial 61000-6-2 EMC Level 3 tested for harsh environments



**VESP211 Serial Servers** connect serial devices (RS-232, RS-422 or RS-485) to Ethernet networks, allowing the serial device to become a node on the network. The serial port can be accessed over a LAN/WAN using Direct IP Mode, Virtual COM Port, or Paired Mode connections. VESP211 Serial Servers feature 10BaseT or 100BaseTX copper network. The product is built for use in industrial environments, featuring a heavy duty metal enclosure that is panel (standard) or DIN rail mountable (with optional adapter). The product operates from a range of DC power supply voltages and features a barrel connector.

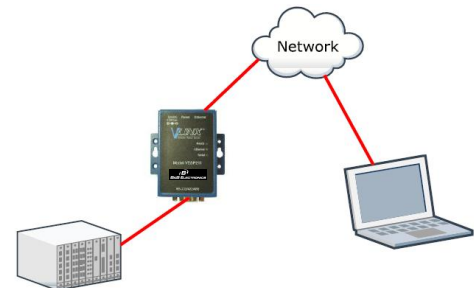
### Ease of Use

Configuration, upgrades and monitoring of the serial server are simple, Easy tasks with Vlinx Manager Software. It installs right on your PC giving you access the serial server via your desktop. Remotely manage the serial server over a LAN or WAN via the build-in web server. This is helpful for off-site troubleshooting and can be done with a simple web browser.

**Software Support** - Windows XP (32/64 bit), 2003 Server (32/64 bit), Vista (32/64 bit), 2008 Server (32/64 bit), Windows 7 (32/64 bit)

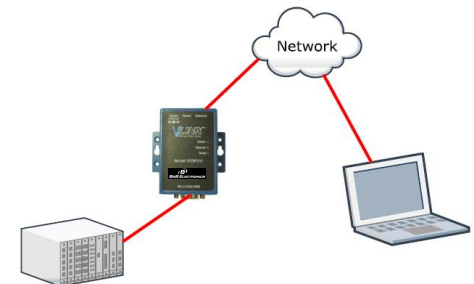
### Direct IP Mode

TCP/IP or UDP/IP socket applications communicate directly with serial devices



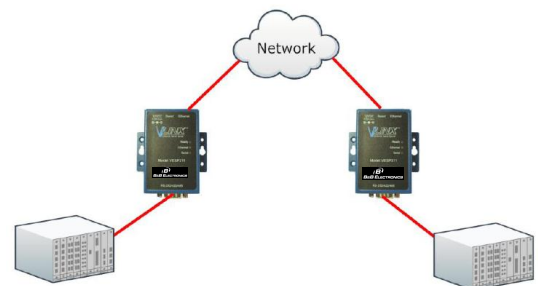
### Virtual COM Mode

Communicate with serial devices through your network as if they were connected to a physical COM port.



### Paired Mode

Serial devices communicate with each other by tunneling through your network.



**Specifications**

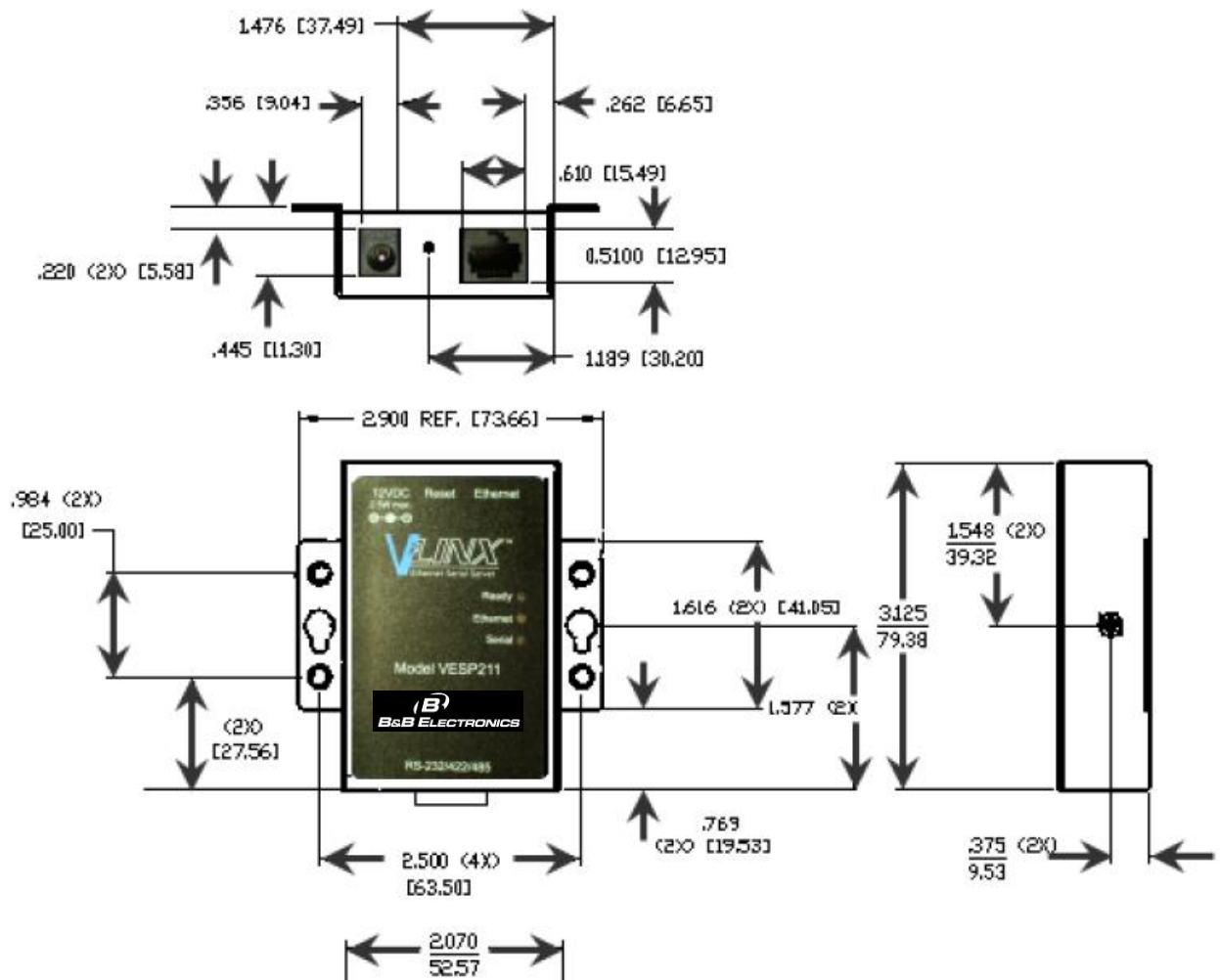
| Serial Technology                    |  |
|--------------------------------------|--|
| RS-232 (DB9)                         | TD, RD, DTR, DSR, RTS, CTS, DCD plus Signal Ground   |
| RS-485 2-Wire                        | Data A(-), Data B(+), GND  |
| RS-422/485 4-Wire                    | TDA(-), TDB(+), RDA(-), RDB(+), GND  |
| Serial Connector                     | DB9M or Removable Terminal Blocks (RS422/485 models)   |
| Data Rate                            | Up to 230.4 Kbps   |
| Power                                |  |
| Source                               | Power supply included  |
| Input Voltage                        | 10 to 30 VDC   |
| Connector                            | Power Connector 5.5 X 2.1MM  |
| Power Consumption                    | 2.5 Watts Max.   |
| Mechanical                           |  |
| LED Indicators                       | Serial Port, Ethernet, Ready LED's   |
| Switches                             | Reset Button   |
| Dimensions                           | VESP211: 3.1 x 0.9 x 2.0 (with ears 2.89) inches   |
| Enclosure                            | Metal, IP 30   |
| Environmental                        |  |
| Operating Temp                       | -40 to 80°C (-40 to 176° F)  |
| Operating Humidity                   | 10 to 95% Non-condensing   |
| MTBF                                 | VESP211 – 186,310 hours  |
| MTBF Calc Method                     | Parts Count Reliability Prediction   |
| Network                              |  |
| Serial Memory                        | 8 KB per port  |
| Network Memory                       | 4 KB   |
| IP Port Addresses                    | 5300 – Heartbeat and configuration      Setting in TCP Mode (paired mode)      8888 – VESP211 Update               |
| Network Communications               |  |
| LAN                                  | 10/100 Mbps Auto-detecting , 10BaseT or 100BaseTX  |
| Network Physical Layer Standards     |  |
| Ethernet                             | IEEE 802.3 auto detecting & auto MDI/MDI-X, 10BaseT and 100Base TX   |
| Protocols                            |  |
| Protocols                            | TCP, IPv4, UDP, ARP, HTTP 1.0, ICMP/PING, DHCP/BOOTP   |
| IP Mode                              | Static, DHCP   |
| TCP/UDP                              | User definable   |
| UDP                                  | Unicast or Multicast   |
| Other                                |  |
| Connection Mode                      | Server, Client, VCOM, Paired   |
| Client Connection                    | At power up or upon data arrival   |
| Search                               | Serial direct COM and Ethernet Auto Search or specific IP  |
| Diagnostics                          | Display PC IP, ping, test VCOM   |
| Firmware Upgrade                     | Web GUI, Ethernet port, serial   |
| Configuration Software               |  |
| OS Compatibility                     | Windows XP (32/64 bit), 2003 Server (32/64 bit), Vista (32/64 bit), 2008 Server (32/64 bit), Windows 7 (32/64 bit) |
| Regulatory / Certifications / Safety |  |
| Compliance                           | FCC Part 15 Class A,<br>CE   |
| EMC                                  | Industrial-Hardened, 15,000 volt-protected, 61000-6-2 certified switch   |

## Ordering Information

| Model No.          | VESP211-232 | VESP211-485              | VESP211              |
|--------------------|-------------|--------------------------|----------------------|
| Serial Protocol    | RS-232      | RS-422/485               | RS-232/422/485 (MEI) |
| Serial Port        | DB9M        | Removable Terminal Block | DB9M                 |
| Ethernet Ports     | 1           | 1                        | 1                    |
| Ethernet Connector | RJ45        | RJ45                     | RJ45                 |

## Accessory Items

|                      |  |
|----------------------|--|
| Din rail clip (pair) | DRAD35   |
| EIRSP1               | Industrial Ethernet Surge Suppressor                 |
| 232NM9               | Null Modem Crossover Cable for DTE to DTE connection |

**Mechanical Diagram**

*Dimensional Diagram of a VESP211 Serial Server (dimensions in inches & millimeters)*